

# TWISTER



## **TWISTER**

*Looking for a sophisticated and original outcome?*

*Twister allows your personal pattern combination, opening a new dimension in your design plan.*

*Decoration that becomes a piece of art, each wall a canvas and each piece a collector's item.*

*Twist your design until your plan comes true!*

-

*¿En busca de ese resultado sofisticado y original?*

*Twister te permite crear tu propia combinación, abriendo una nueva dimensión en tu diseño.*

*La decoración se convierte en una obra de arte, cada pared un lienzo y cada pieza un objeto de colección.*

*¡Gira y gira tu diseño hasta que tus planes se hagan realidad!*

<b>01.</b> SIZES, COLOURS AND FINISHES / FORMATOS, COLORES Y ACABADOS	<i>pag. 4</i>
<b>02.</b> GET INSPIRED / INSPIRATE	<i>pag. 6</i>
<b>03.</b> LAYOUTS / COLOCACIONES	<i>pag. 30</i>
<b>04.</b> TECHNICAL FEATURES / CARACTERÍSTICAS TÉCNICAS	<i>pag. 36</i>
<b>05.</b> PACKING	<i>pag. 37</i>
<b>06.</b> PRICE CODE CÓDIGO DE TARIFA	<i>pag. 37</i>
<b>07.</b> TECHNICAL DRAWINGS / DIBUJOS TÉCNICOS	<i>pag. 38</i>







## TWISTER

T 12,5x12,5 cm / 5"x5"



Vapor



Greige



Mint Grey



Toffee



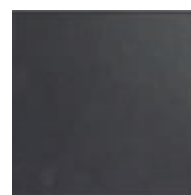
Titanium Blue



Dove Stone

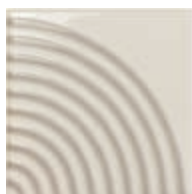


Taupe Stone



Graphite Stone

TWIST 12,5x12,5 cm / 5"x5"



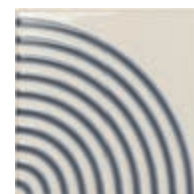
Vapor Greige



Vapor Mint Grey



Vapor Toffee



Vapor Titanium Blue



Dove Stone  
Taupe



Dove Stone  
Graphite



Taupe Stone  
Graphite

ER 12,5x12,5 cm / 5"x5"

---



Vapor Greige



Vapor Mint Grey



Vapor Toffee



Vapor Titanium Blue



Dove Stone  
Taupe



Dove Stone  
Graphite



Taupe Stone  
Graphite

SPECIAL PIECE

---



**TWISTER EDGE\***  
0,8 x 12,5 cm / 0.31" x 5"

\* Available in all T Colours  
\* Disponible en todos los colores de T

**T** Vapor ▶  
**Twist** Vapor Toffee & Mint Grey  
**Er** Vapor Toffee & Mint Grey



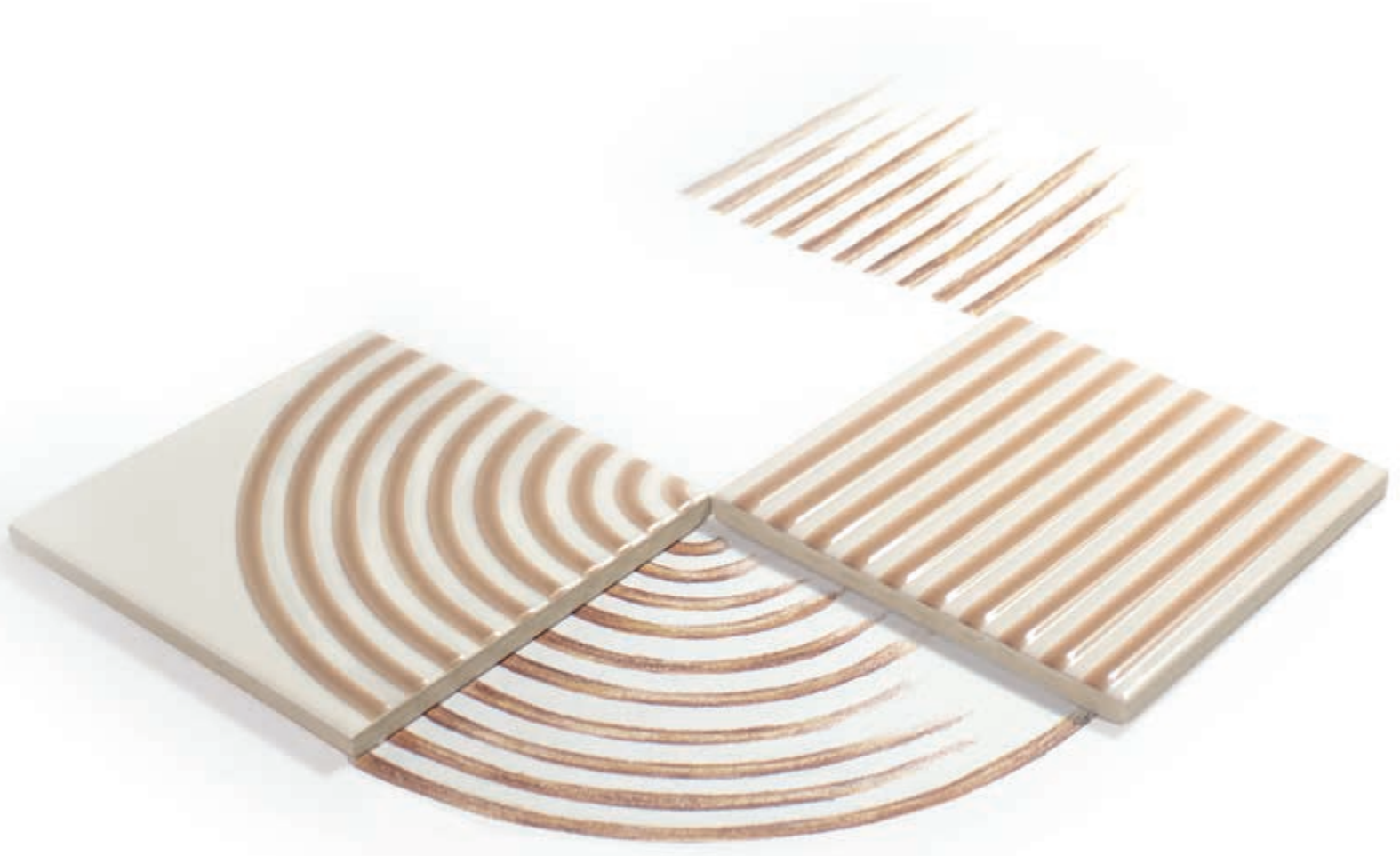
TWISTER





02. GET INSPIRED / INSPÍRATE

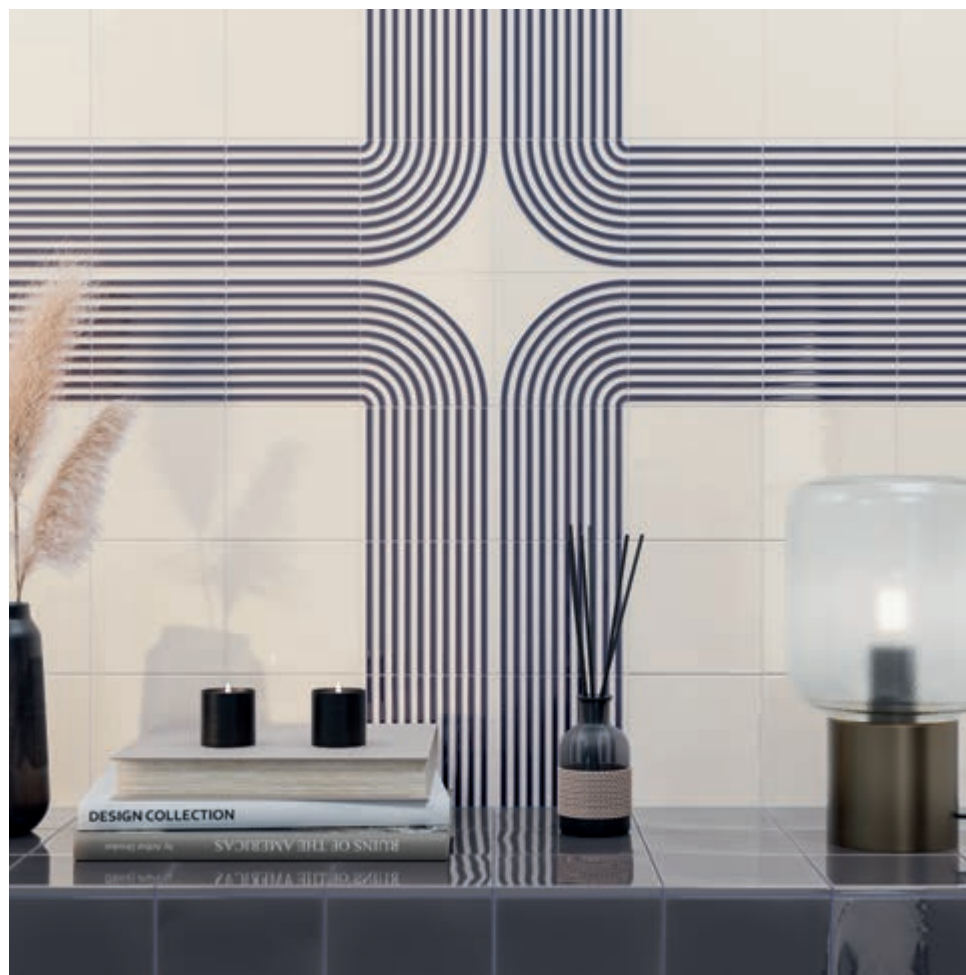




- ◀ **T** Toffee & Vapor
- Er** Vapor Toffee

Setting image (pattern)  
**T** - 50 % + **Er** - 50%

Floor Tiles: **Solid** XS & S Moss



**T** Vapor & Titanium Blue  
**Twist** Vapor Titanium Blue  
**Er** Vapor Titanium Blue

**T** Vapor ►  
**Twist** Vapor Titanium Blue  
**Er** Vapor Titanium Blue

Setting image (random pattern)  
approx. **T** - 69,5% + **Twist** - 14% + **Er** - 16,5%

Floor Tiles: **Point & Dash** Peacock

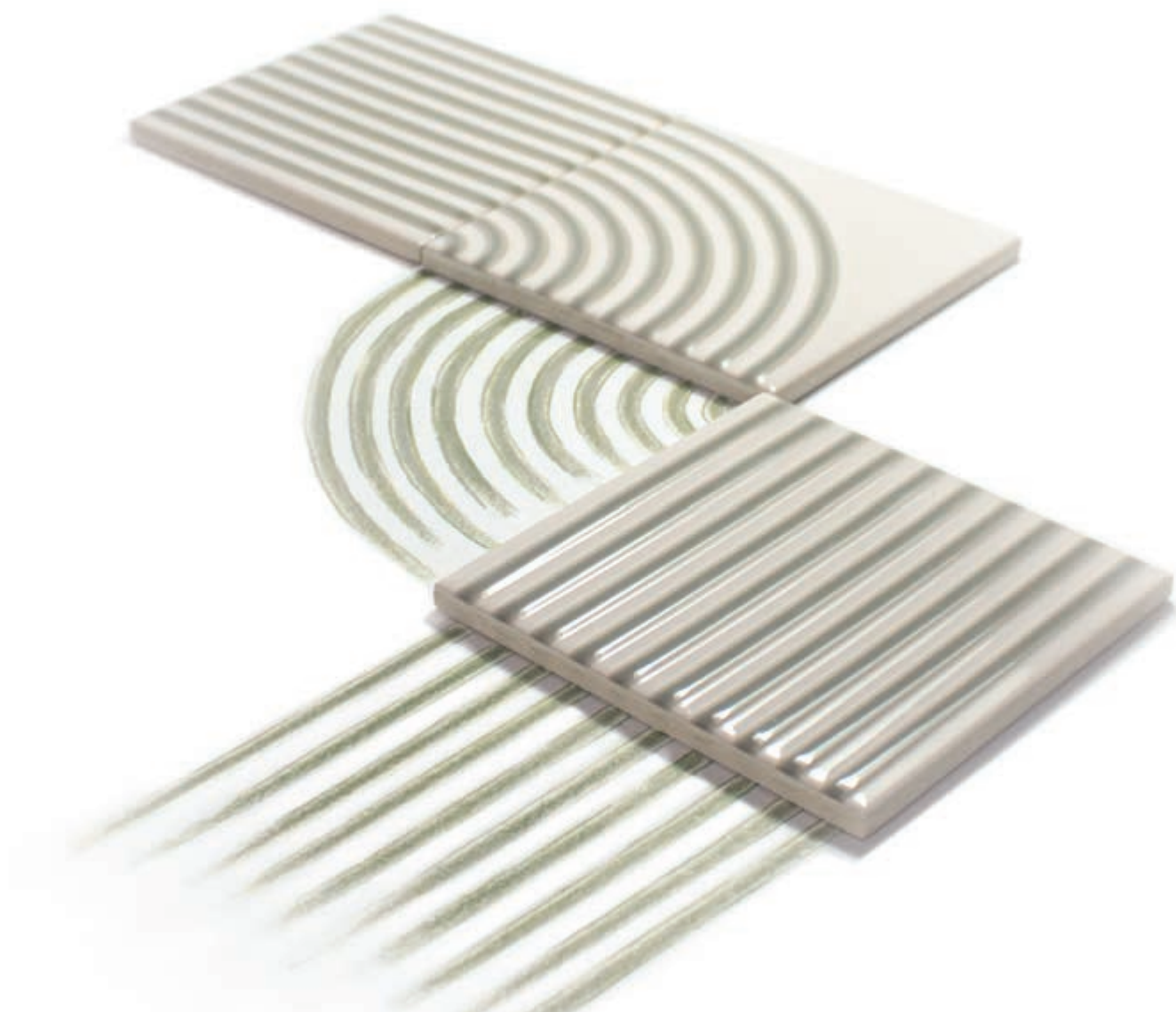
TWISTER





02. GET INSPIRED / INSPÍRATE





- ◀ **T** Mint Grey & Vapor  
**Twist** Vapor Mint Grey  
**Er** Vapor Mint Grey

Setting image (random pattern)  
approx. **T** - 60% + **Twist** - 11,5% + **Er** - 28,5%

*Floor Tiles:* **Love Affairs** Petra Crayon Sand

02. GET INSPIRED / INSPÍRATE



T Vapor ▶  
Twist Vapor Toffee  
Er Vapor Toffee









- ◀ **T** Vapor & Titanium Blue  
**Twist** Vapor Titanium Blue  
**Er** Vapor Titanium Blue

Setting image (pattern)

**Twist** - 50% + **Er** - 50% + **T**

Floor Tiles: **Tesseræ** Play Blanc



**T** Vapor & Greige  
**Twist** Vapor Greige  
**Er** Vapor Greige

*Floor Tiles:* **Bejmat** Tan, Square Tan

**T** Vapor & Greige ►  
**Twist** Vapor Greige  
**Er** Vapor Greige

Setting image (pattern)  
**T** - 12,5% + **Twist** - 37,5% + **Er** - 50%

*Floor Tiles:* **Point & Dash** Neutral



TWISTER





02. GET INSPIRED / INSPÍRATE

**T** Dove Stone & Graphite Stone ▶  
**Er** Dove Stone Graphite  
**Twister Edge** Dove Stone Graphite

Setting image (pattern)  
**T** - 33,3% + **Er** - 66,7%

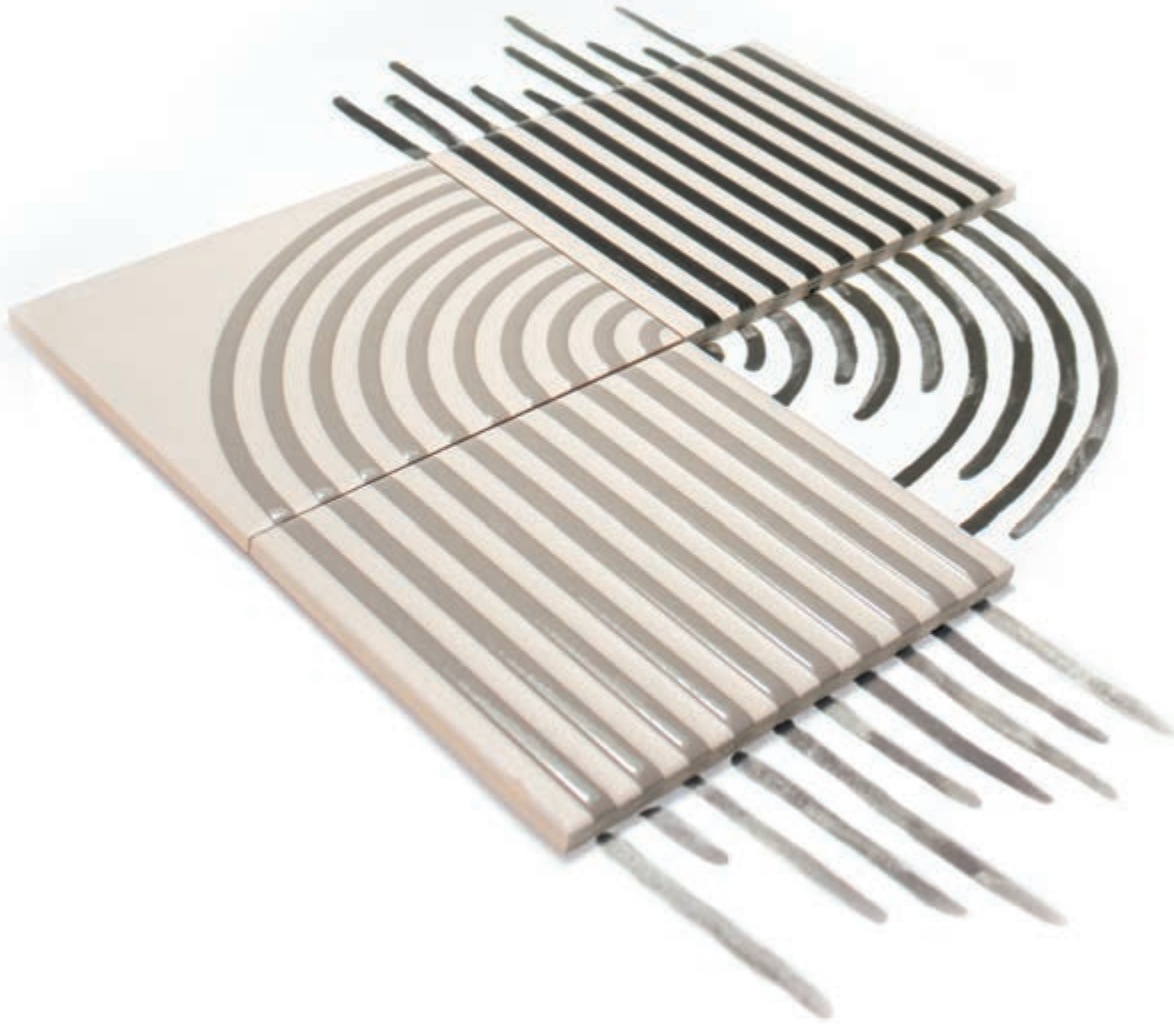
Floor Tiles: **Love Affairs** Contempo Strip Oak







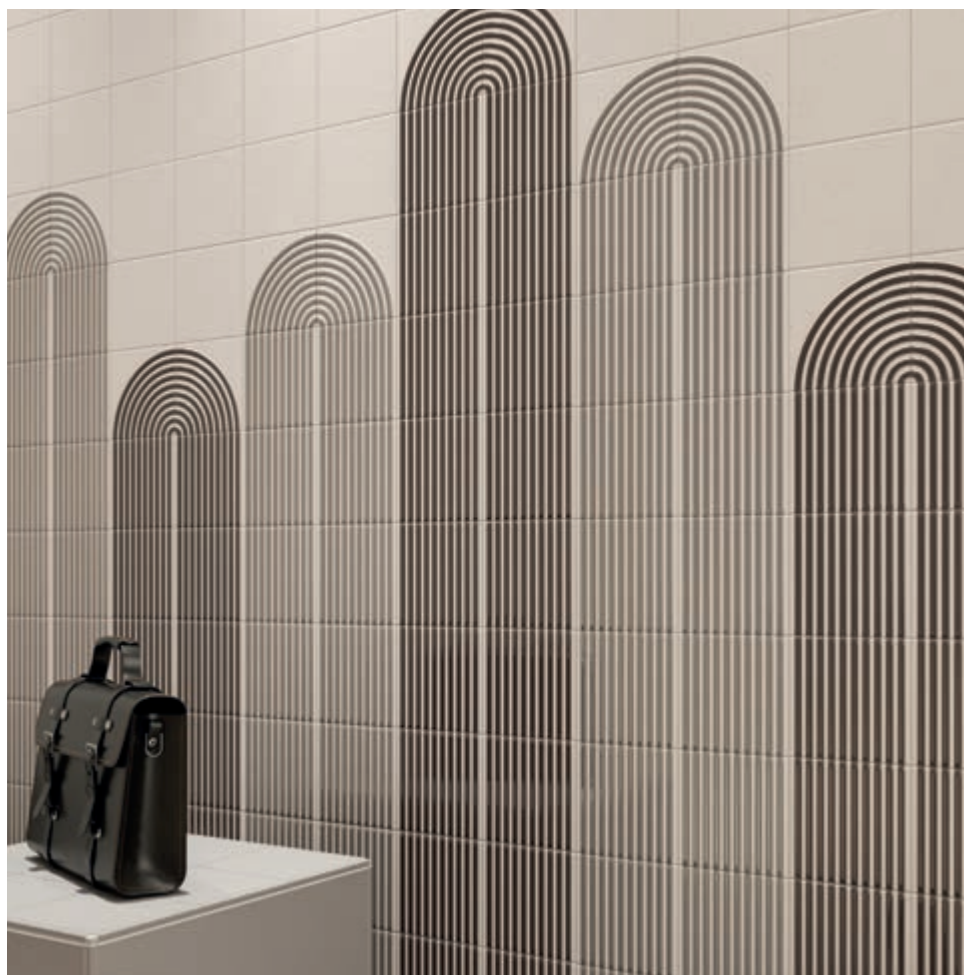




- ◀ T Dove Stone
- ◀ **Twist** Dove Stone Graphite
- ◀ **Er** Dove Stone Graphite
- ◀ **Twister Edge** Dove Stone

*Floor Tiles:* **Stardust** Nero





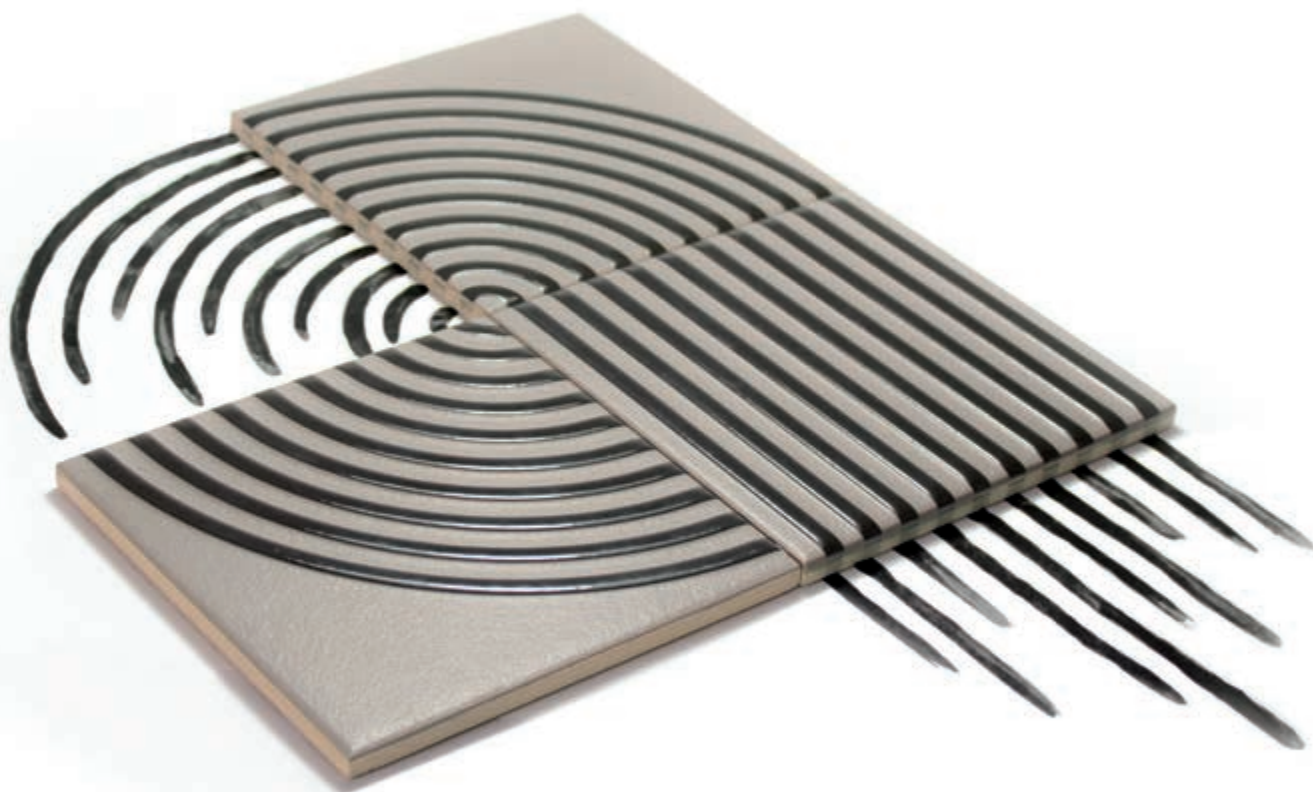
▲  
T Dove Stone & Taupe Stone ►  
Twist Dove Stone Graphite & Dove Taupe Stone  
Er Dove Stone Graphite & Dove Taupe Stone  
Twister Edge Taupe Stone

Floor Tiles: Drops Natural Drops Beige



TWISTER





◀ **T** Taupe Stone  
**Er** Taupe Stone Graphite

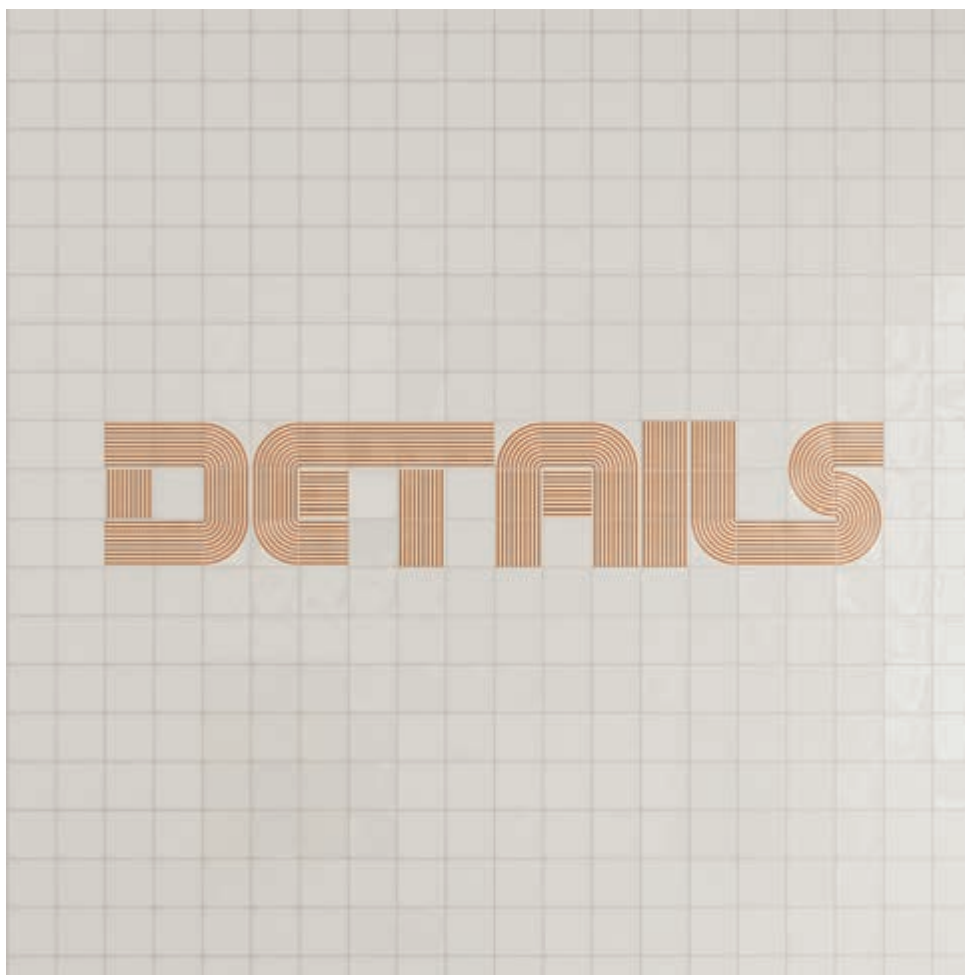




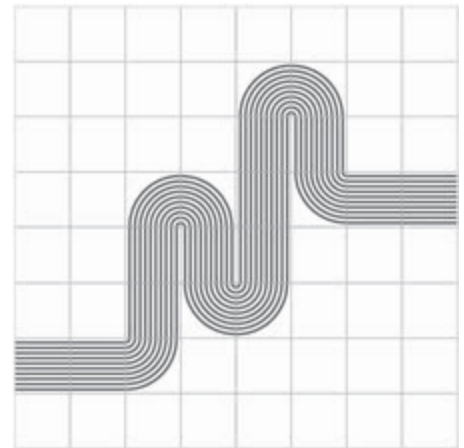
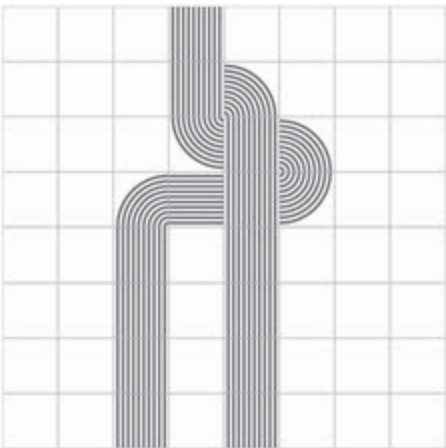
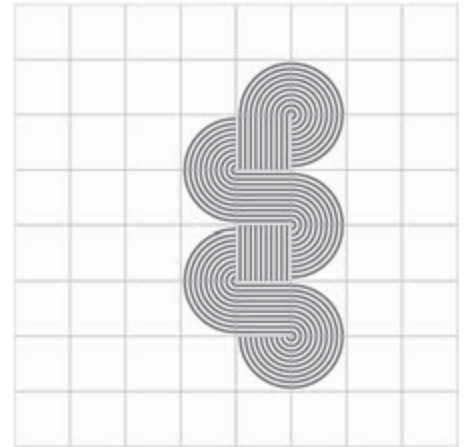
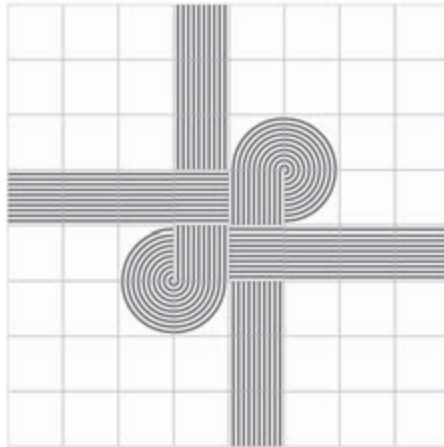
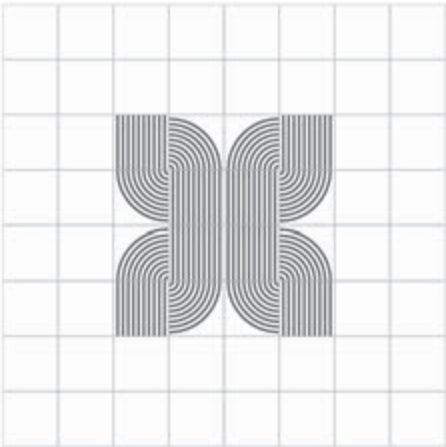
**T** Dove Stone & Taupe Stone ▶  
**Er** Dove Stone Taupe  
**Twister Edge** Taupe Stone

Setting image (pattern)  
**T** - 50%, **Twist** - 33,3% & **Er** - 16,7%



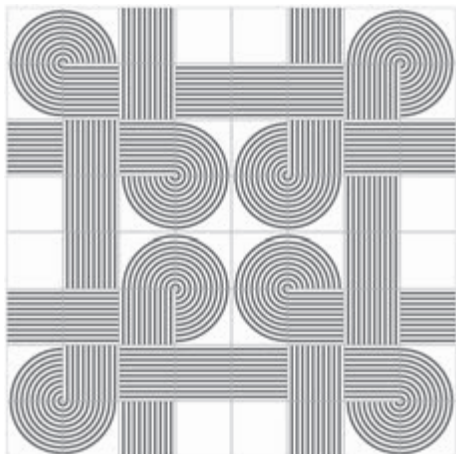




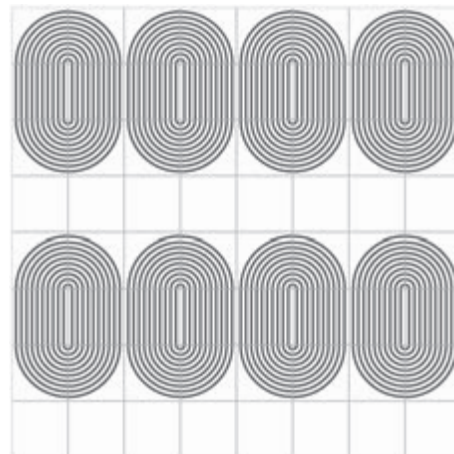




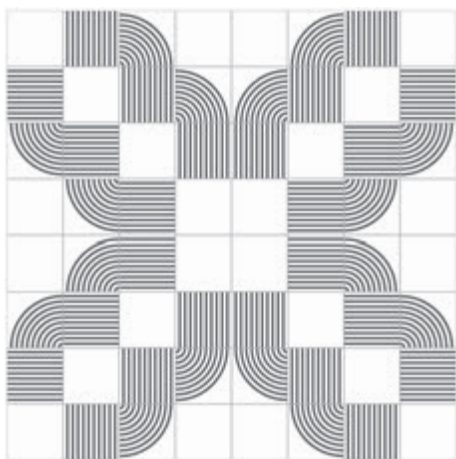




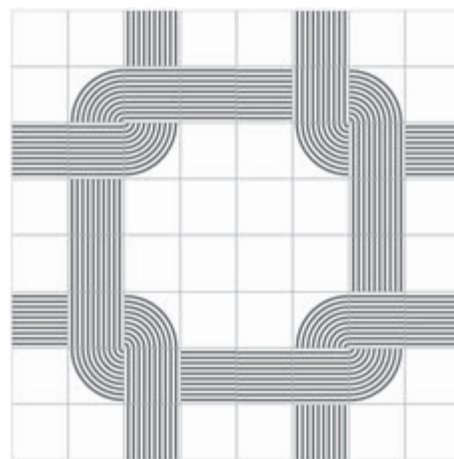
**T** - 12,5%  
**Twist** - 37,5%  
**Er** - 50 %



**T** - 25%  
**Twist** - 50%  
**Er** - 25 %



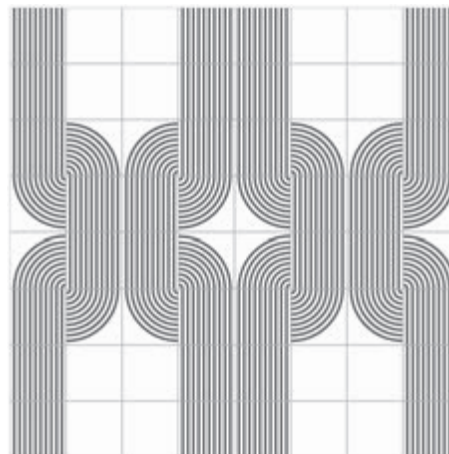
**T** - 37,5%  
**Twist** - 25%  
**Er** - 37,5 %



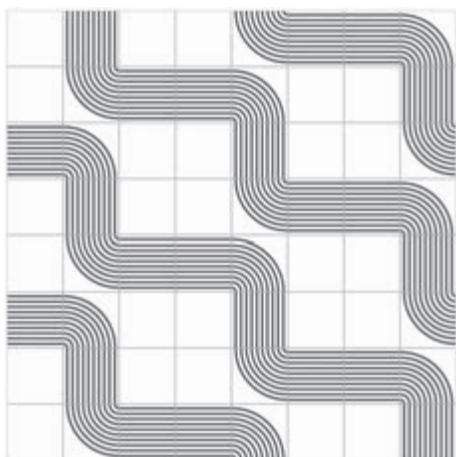
**T** - 50%  
**Twist** - 12,5%  
**Er** - 37,5 %



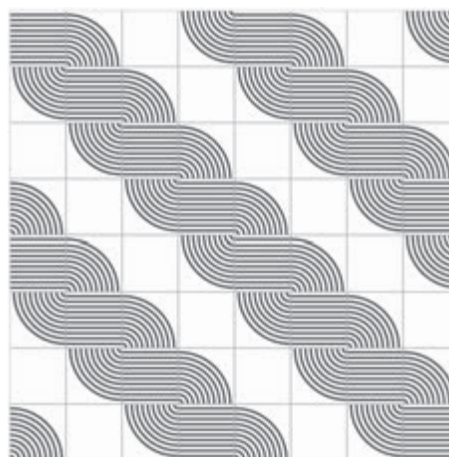
**Twist** - 75%  
**Er** - 25%



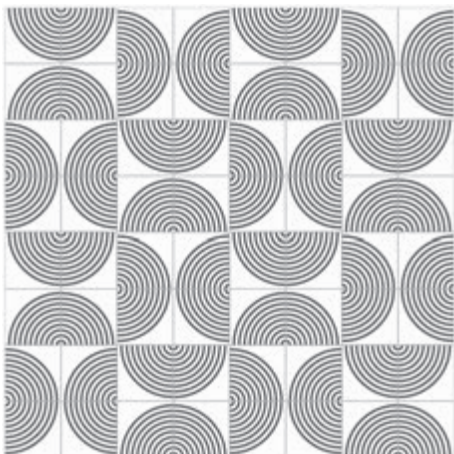
**T** - 25%  
**Twist** - 25%  
**Er** - 50%



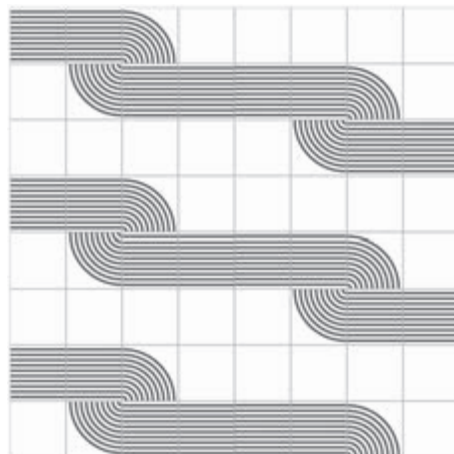
**T** - 44,5%  
**Twist** - 22,2%  
**Er** - 33,3%



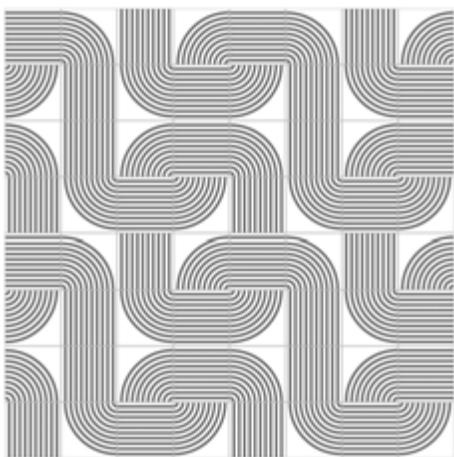
**T** - 25%  
**Twist** - 50%  
**Er** - 25%



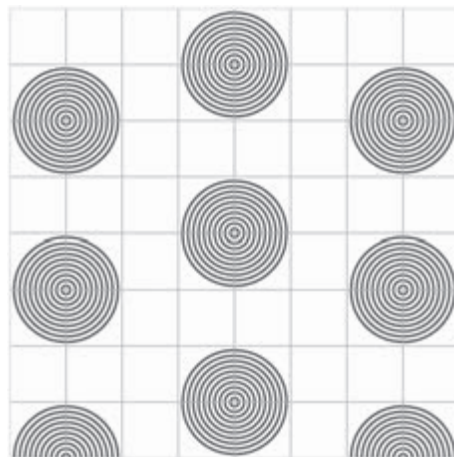
**Twist** - 100%



**T** - 25%  
**Twist** - 25%  
**Er** - 50%



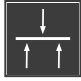







**Twist** - 50%  
**Er** - 50%









**T** - 55,6%  
**Twist** - 44,4%



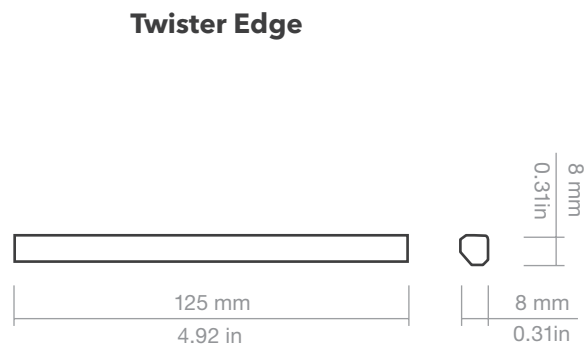
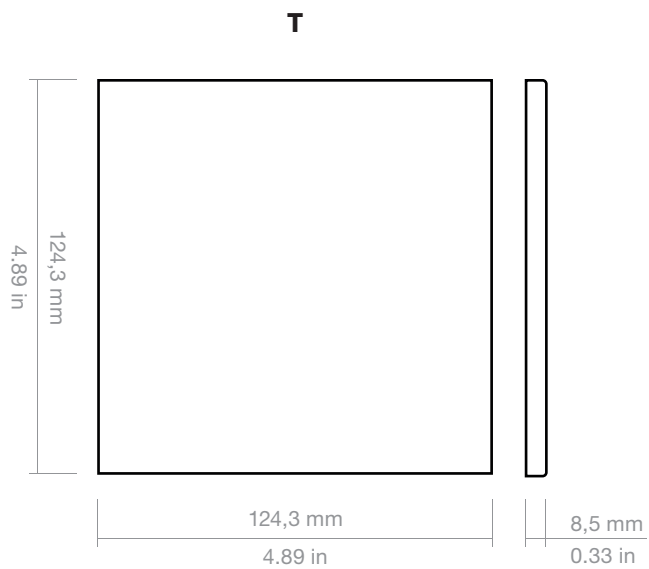
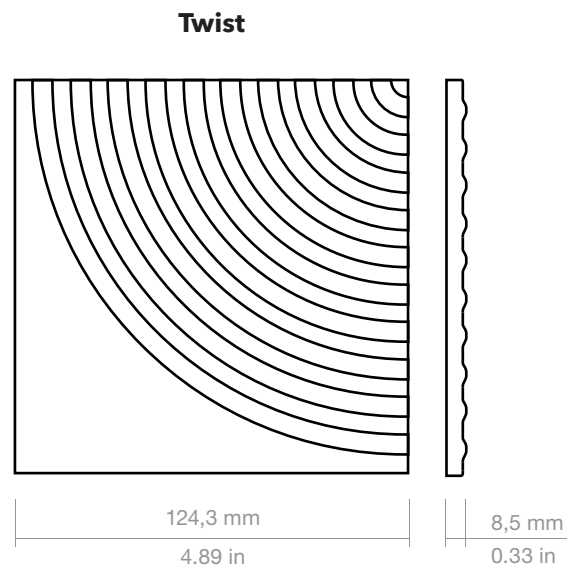
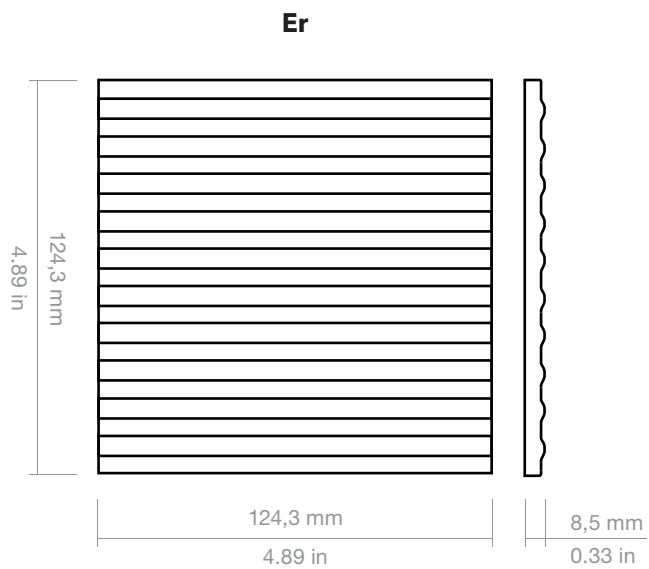
<b>Technical features for Dry-Pressed ceramic tiles with water absorption BIII (Eb &gt;10%)</b> Características técnicas para las baldosas cerámicas prensadas en seco del grupo BIII (Eb >10%)			
FEATURES / CARACTERÍSTICAS	SPECIFICATION / ESPECIFICACIÓN		NORMA
 Dimensional Features	124,3 mm +/- 0,75 mm % x 124,3 mm +/- 0,75 mm		UNE-EN ISO 10545-2:1998
 Water absorption	> 10%		UNE-EN ISO 10545-3:1997
 Modulus of rupture and breaking strength	Thickness $\geq$ 7,5 mm mínimo 12 N/mm <sup>2</sup> Thickness < 7,5 mm mínimo 15 N/mm <sup>2</sup>		UNE-EN ISO 10545-4:2012
 Crazeing resistance	Pass		UNE-EN ISO 10545-11:1997
 Household products resistance	GA		UNE-EN ISO 10545-13:1998
 Chemical resistance	GHA		UNE-EN ISO 10545-13:1998
 Stain resistance	5		UNE-EN ISO 10545-14:1998
 White Body	-		

			KG 	M2 		M2 
Modelo	Formato (cm)	Piezas / Caja	Kg / Caja	m2 / Caja	Cajas / Palet	m2 / Palet
T	12,5x12,5 cm	39	7,88 kg	0,603 m <sup>2</sup>	102	61,506 m <sup>2</sup>
TWIST	12,5x12,5 cm	36	8,00 kg	0,556 m <sup>2</sup>	102	56,712 m <sup>2</sup>
ER	12,5x12,5 cm	36	7,95 kg	0,556 m <sup>2</sup>	102	56,712 m <sup>2</sup>
TWISTER EDGE	0,8x12,5 cm	10	0,219 kg	1,24 m	200	248 m

			LB 	FT2 		FT2 
Model	Format (in)	Pieces / Box	Lb/ box	sq ft / Box	Boxes / Pallet	sq ft / Pallet
T	5"x5"	39	17.37 lb	6.491 ft <sup>2</sup>	102	662.082 ft <sup>2</sup>
TWIST	5"x5"	36	17.64 lb	5.985 ft <sup>2</sup>	102	610.470 ft <sup>2</sup>
ER	5"x5"	36	17.53 lb	5.985 ft <sup>2</sup>	102	610.470 ft <sup>2</sup>
TWISTER EDGE	0.3"x5"	10	0.48 lb	4.07 ft	200	814 ft

*Price code - Código de tarifa*

MODEL / MODELO	PRICE CODE / CODIGO TARIFA
T	W14
TWIST	W21
ER	W21
TWISTER EDGE	WS3



### **BEFORE INSTALLING THE PRODUCT**

The surface where the product is being installed must be clean and level.

It is recommended that the layout of the product is prepared before the final installation.

Make sure you choose an adhesive apt for the area where the product is being installed.

For installation on porous surfaces we recommend: Kerakoll Special® Eco, and for Non-porous surfaces: Kerakoll serie H40® Eco.

The choice of quality grouting mortar is crucial. We recommend Kerakoll Fugabella® Color. ([www.kerakoll.com](http://www.kerakoll.com))

### **TO ENHANCE YOUR WOW PRODUCT**

In order to obtain the maximum WOW effect, use 1,5 mm - 0.059 in spacers between the tiles to maintain an even installation over the whole surface.

The colour of the grout should be as close as possible to the colour of your product.

Once the area has been grouted, and before the grout dries, remove any excess material with a damp sponge.

### **MAINTENANCE**

Maintenance free. Easy and practical to care for, due to the high standard of technical characteristics in each WOW ceramic product.

Avoid abrasive or acidic cleaning products.

It is recommended to clean with clear water.

### **ANTES DE LA COLOCACIÓN**

Preparar la superficie sobre la que se va a colocar tu producto WOW. Debe estar limpia y aplomada.

Se recomienda plantear la colocación, previo a su instalación. Elegir el material de agarre en función de las características de la superficie.

Se recomienda para colocación general en superficies porosas: Kerakoll special® Eco. y para superficies no porosas como el pladur: kerakoll serie H40® Eco.

Es importante la elección de un material de rejunte de calidad. WOW recomienda utilizar el material de rejunte Kerakoll fugabella® Color ([www.kerakoll.com](http://www.kerakoll.com)), cuyas características son especialmente adecuadas para este revestimiento.

### **PARA ENSALZAR EL ASPECTO DE TU PRODUCTO WOW**

Se recomiendan separadores de 1,5 mm para colocar las piezas y conseguir de esta forma un aspecto WOW óptimo. También es aconsejable que el color de rejuntado sea similar al color del producto elegido.

Una vez rejuntado el producto, y antes de que se endurezca, retirar el material sobrante de rejuntado con una esponja mojada en agua.

### **MANTENIMIENTO**

Práctico y sencillo de limpiar, dadas las excelentes características técnicas del producto WOW, tan sólo es necesario un cuidado rutinario, evitando la utilización de productos abrasivos o ácidos.

Se recomienda limpiar exclusivamente con agua limpia.



Designed by



Polígono Pont, Avda. de España 114  
12180 Cabanes,  
Castellón (Spain)  
t. +34 964 331 910 / f. +34 964 331 911

[www.wowdesigneu.com](http://www.wowdesigneu.com)  
[comercial@wowdesigneu.com](mailto:comercial@wowdesigneu.com)



©2023 Tendencias Cerámicas  
WOW, registered trademark of Tendencias Cerámicas, S.L.

The brand use or reproduction of the contents of this catalog, is protected by copyright law. Any use of the brand or reproduction thereof, in part or total, must be authorized by Tendencias Cerámicas, S.L. Otherwise, this action can be sanctioned according to the Law.

©2023 Tendencias Cerámicas  
WOW, marca registrada por Tendencias Cerámicas, S.L.

La utilización de la marca o la reproducción del contenido de este catálogo está protegida por la Ley de Propiedad Intelectual. Cualquier uso de la marca o la reproducción del mismo, en parte o en su totalidad, debe ser autorizada por Tendencias Cerámicas, S.L., pudiendo, en caso contrario, ser esta acción sancionada de acuerdo con la Ley.

WOW reserves the right to modify and/or discontinue certain models displayed in this catalogue.  
The colour of the pieces displayed herein may differ slightly from originals.  
The settings shown in this catalogue are design proposals for advertising purposes.  
In real situations in which the pieces are laid, the installation instructions published by WOW should be followed.

WOW se reserva el derecho de modificar y/o suprimir ciertos modelos expuestos en este catálogo sin previo aviso.  
Los colores de las piezas pueden presentar ligeras diferencias respecto a las originales.  
Los ambientes que se muestran en este catálogo son sugerencias decorativas de carácter publicitario,  
debiéndose utilizar en la instalación real las instrucciones de colocación editadas por WOW.





WOW

[www.wowdesigneu.com](http://www.wowdesigneu.com)