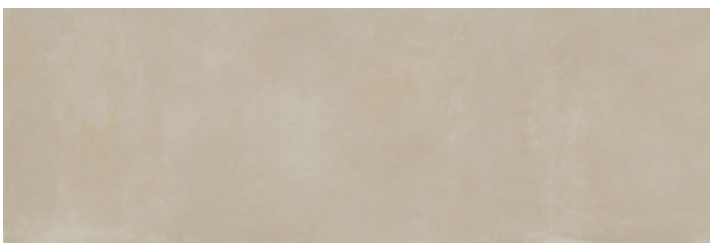
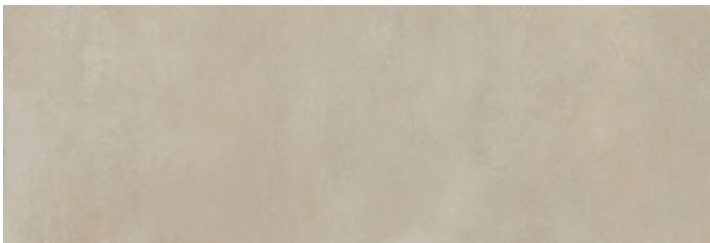
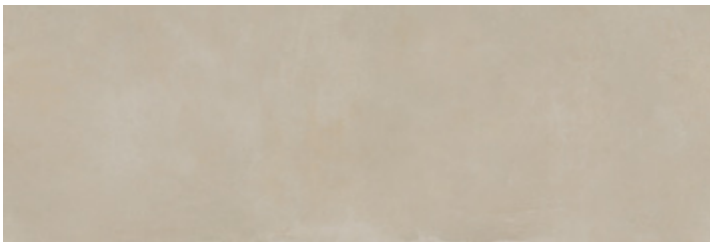
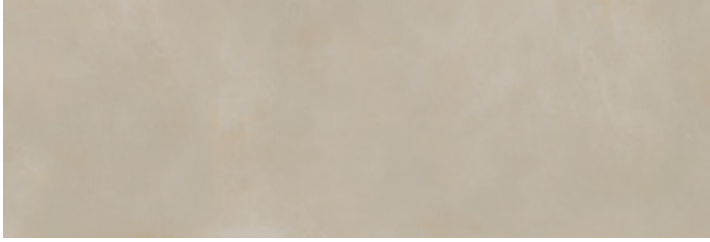


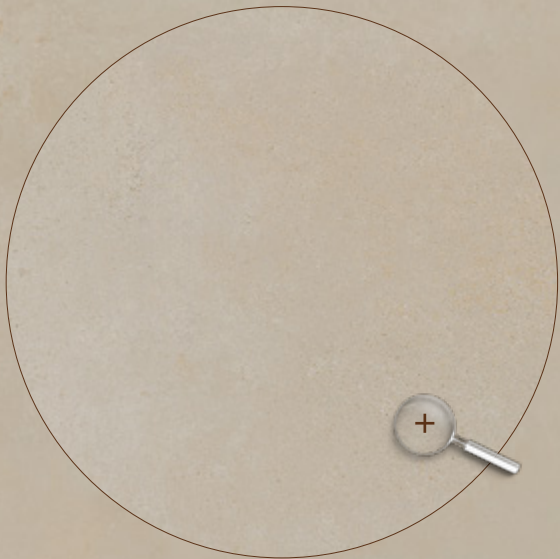
# VENUS

finishes	thickness	sizes/cm	sizes/in
Semilucidato	6 mm	300x100	120"x40"
Honed		150x100	60"x40"
Semi-Matt		100x100	40"x40"
Semi-Lustré			
Semisatinado			



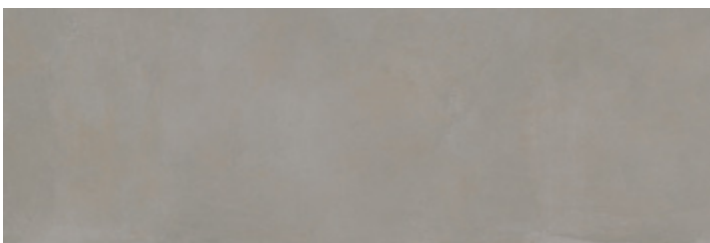
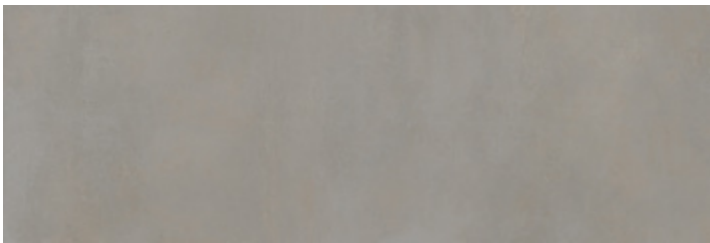
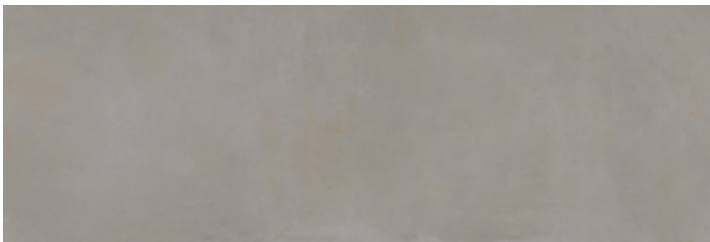
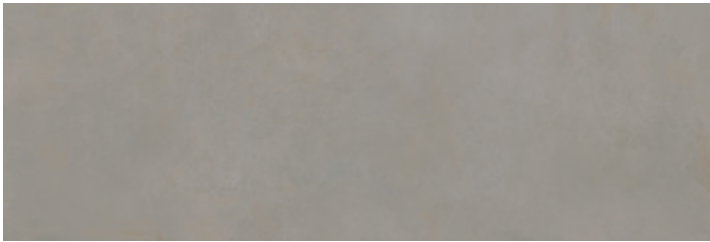
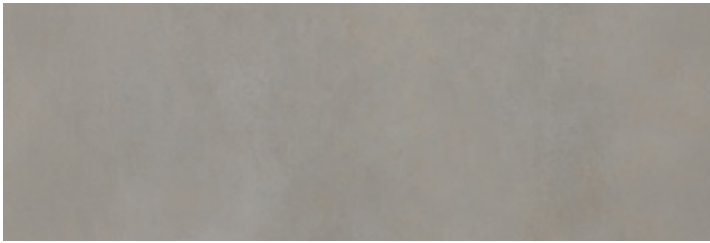
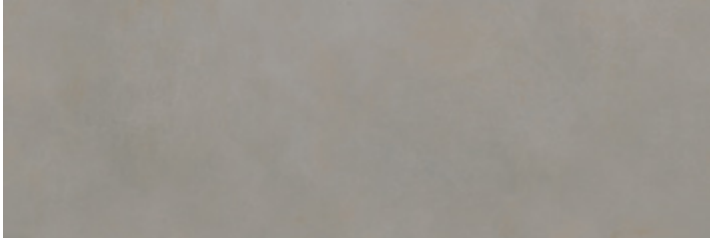
**pag 279 / VARIETY AND BOOK-MATCHING**

Maximum includes a certain number of different surfaces, for the same product, to create pleasing aesthetic variety in the layout. When preparing the order, the surfaces are selected randomly, and therefore book-matching is not guaranteed. Maximum is the outcome of the bond between earth and fire. Any book-matching between two pieces is subject to the typical tolerance of natural products.



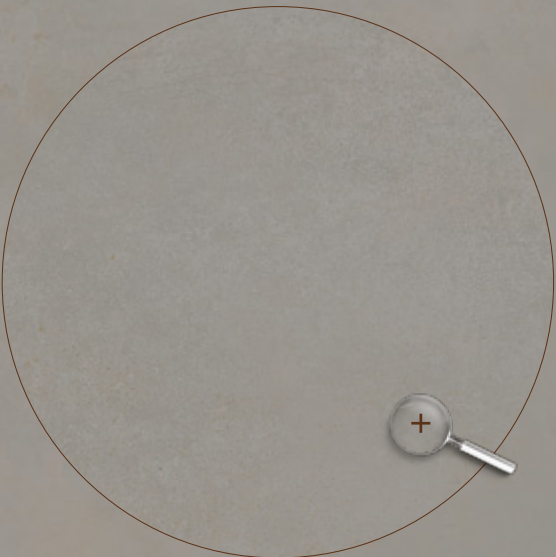
# MERCURY

finishes	thickness	sizes/cm	sizes/in
Semilucidato	6 mm	300x100	120"x40"
Honed		150x100	60"x40"
Semi-Matt		100x100	40"x40"
Semi-Lustré			
Semisatinado			

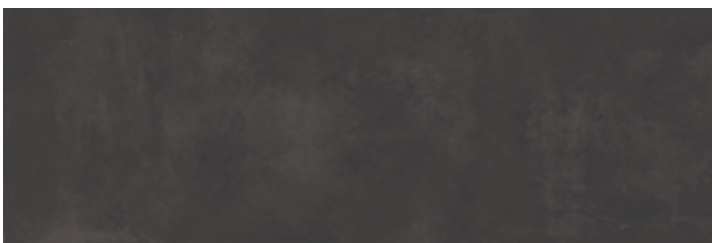


**pag 279 / VARIETY AND BOOK-MATCHING**

Maximum includes a certain number of different surfaces, for the same product, to create pleasing aesthetic variety in the layout. When preparing the order, the surfaces are selected randomly, and therefore book-matching is not guaranteed. Maximum is the outcome of the bond between earth and fire. Any book-matching between two pieces is subject to the typical tolerance of natural products.



finishes	thickness	sizes/cm	sizes/in
Semilucidato	6 mm	300x100	120"x40"
Honed		150x100	60"x40"
Semi-Matt		100x100	40"x40"
Semi-Lustré			
Semisatinado			



**pag 279 / VARIETY AND BOOK-MATCHING**

Maximum includes a certain number of different surfaces, for the same product, to create pleasing aesthetic variety in the layout. When preparing the order, the surfaces are selected randomly, and therefore book-matching is not guaranteed. Maximum is the outcome of the bond between earth and fire. Any book-matching between two pieces is subject to the typical tolerance of natural products.

